



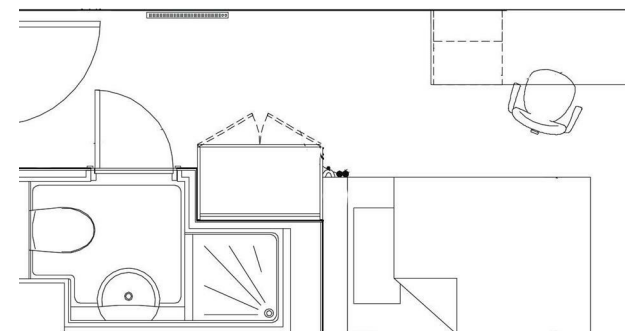
Crewe Street | | Chester | CH1 3DA

£159 Per week



Crewe Street |
 Chester | CH1 3DA
 £159 Per week

CHESTER | STUDENT | SEPTEMBER



- Social space
- Onsite social events
- High speed Wi-Fi
- Utilities including water and heating
- Strong community
- Garden area
- Onsite laundry facilities
- Contents insurance
- Excellent location
- Student only

| Energy Efficiency Rating | | Current | Potential |
|--|--|----------------------------|-----------|
| <i>Very energy efficient - lower running costs</i> | | | |
| (92 plus) A | | | |
| (81-91) B | | | |
| (69-80) C | | | |
| (55-68) D | | | |
| (39-54) E | | | |
| (21-38) F | | | |
| (1-20) G | | | |
| <i>Not energy efficient - higher running costs</i> | | | |
| England & Wales | | EU Directive 2002/91/EC | |

Lower Ground Floor
 27 Ridley Place
 Newcastle upon Tyne
 Tyne and Wear
 NE1 8JN
 0191 6403450
 info@propertybynest.co.uk